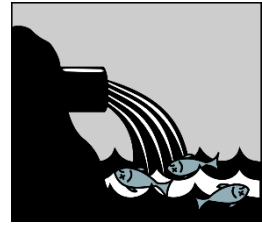


## WEB-QUEST WORKSHEET



**<https://www.youtube.com/watch?v=tAXanQ8yN0s>**

1. What are the 3 criteria for an area to be considered a “wetland”?

2. Why do we need to protect wetlands?

**<https://www.nwrc.usgs.gov/wetlands.htm>**

3. Name 4 organisms that use or live in wetlands.

4. Name 3 threats to wetlands.

**<http://www.explainthatstuff.com/waterpollution.html>**

5. Explain how water pollution is dependent upon quantities.

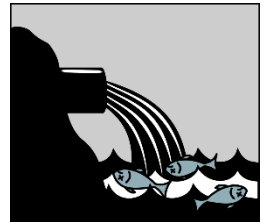
6. What is the difference between surface water and groundwater?

7. Describe point-source and nonpoint-source pollution.

**<https://www.youtube.com/watch?v=oaXth88i7rk>**

8. What could be a potential problem if your stormwater goes directly back into a river (untreated)?

9. Why shouldn't you hook up your drain spouts to the sewer system?
10. Name 6 things you should not put down your sink or toilet.
11. Provide the purpose of each of the following steps at the wastewater treatment plant:
1. Coarse and fine screens:
  2. Grit removal:
  3. Settling basin:
  4. Biological aerated filters:
  5. Ultraviolet lamps:



**<http://www.pbs.org/now/science/cleanwater.html>**

12. The Clean Water Act was first known as the
- 

13. Name 2 situations of pollution that led to the passing of the Clean Water Act in 1972.
14. What fraction of the country's lakes, rivers, and coastal waters were unsafe for fishing and swimming in 1972?
15. What happened in 2001 regarding wetlands?